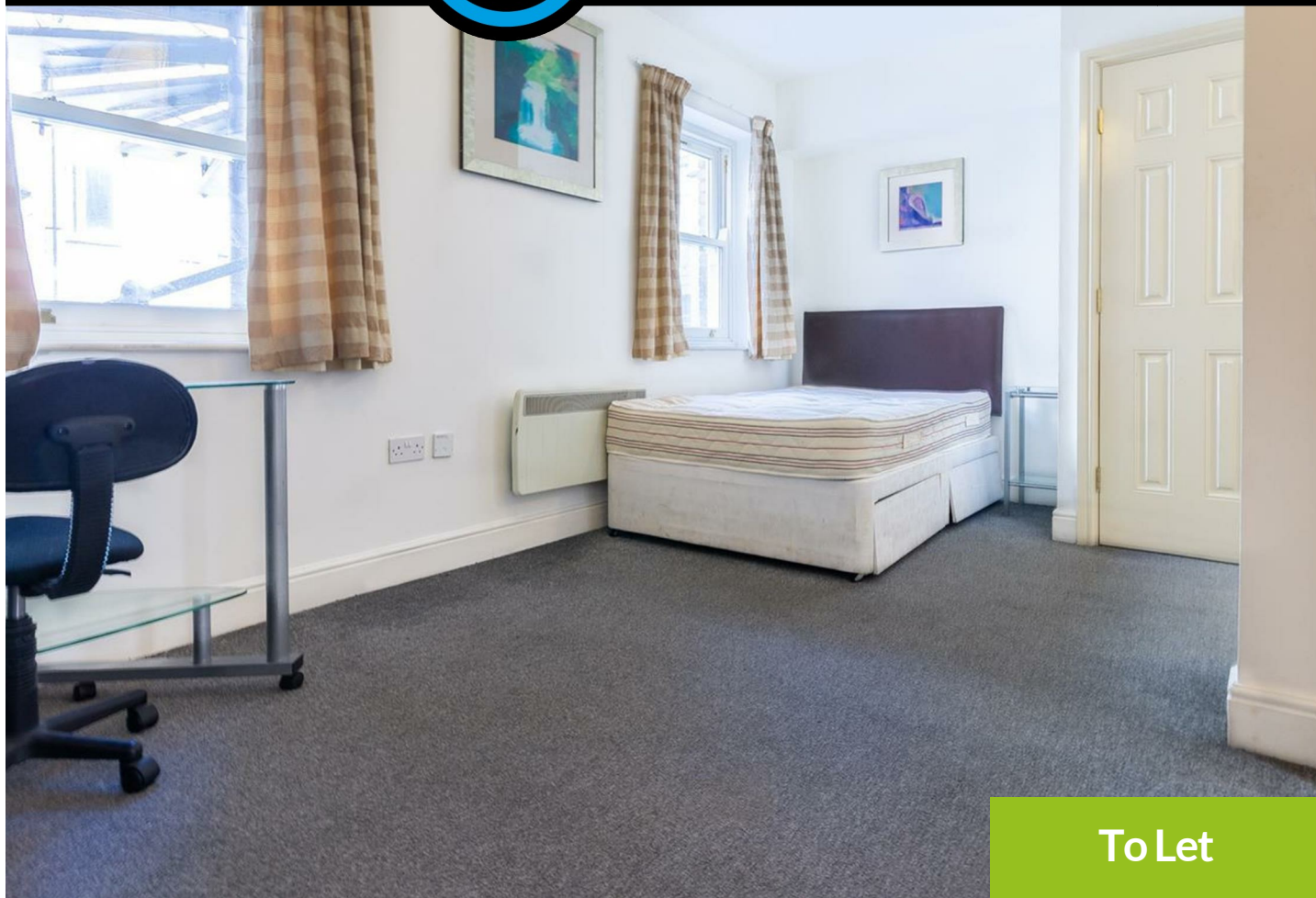




# WALTON ROBINSON



To Let

## 5 24 Westmorland Road, City Centre NE1 4EG

£725 PCM



Charming first-floor studio apartment situated on Westmorland Road offers convenience, being in close proximity to Newcastle Central Station and within easy walking distance of both universities.

Boasting a generously sized open-plan bedroom/living area featuring a comfortable double bed and a separate leather sofa, this apartment provides ample space for relaxation and daily living. The modern kitchen is fully equipped with essential appliances, including a fridge/freezer and a washing machine, ensuring convenience for your daily needs. Benefiting from electric heating and double glazing, the apartment provides comfort and energy efficiency. Situated at the rear of the building, it offers a serene environment, ideal for unwinding after a busy day.

\*\*All property descriptions are assumed correct at time of publication. Any reference to property details, specifications or other inclusions are subject to change and may be altered at any given time.

- First Floor Studio Apartment
- Open Plan Living
- £725PCM
- Close to Both Universities
- EPC Rating - C
- One Bedroom
- Modern Furnishings
- Available 10/09/25
- Secure Entry System
- COUNCIL TAX BAND - A



101 Percy Street, City Centre, Newcastle upon Tyne, NE1 7RY

T: 01912431000 | Email: [enquiries@seekersproperty.co.uk](mailto:enquiries@seekersproperty.co.uk) | [www.waltonrobinson.com](http://www.waltonrobinson.com)